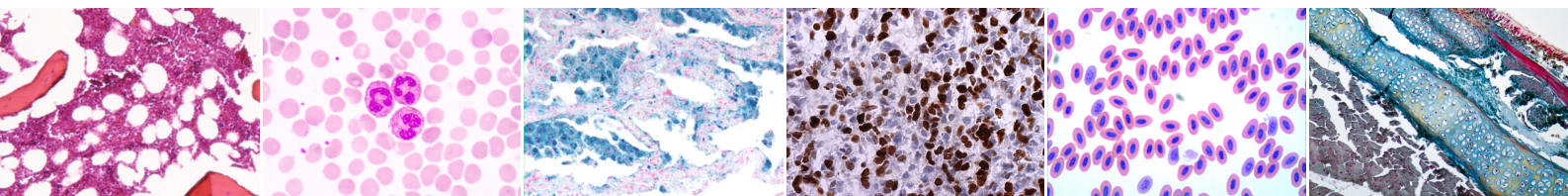


DM1210 Series



Digital Microscope Based on Nikon Ei

DM1210 Series

The DM1210 series of digital microscopes are based on Nikon's newly launched Eclipse Ei microscope.

They are equipped with versatile embedded cameras that are specially designed according to ergonomics combined with the structure of the microscope.

The embedded camera does not change the original optical path, not only supports synchronization between the digital image and the eyepiece field of view, but also performs color balance calibration according to the characteristics of the Nikon Ei microscope optical system, providing users with high-quality images and excellent visual experience.

It comes with multiple output modes and supports multi-person viewing through WiFi. HDMI output is especially suitable for digital conference presentations and education. There are three types of embedded camera for option.



Specifications

Model	DM1210H-Ei	DM1210T-Ei	DM1210C-Ei
Main body	Nikon ECLIPSE Ei binocular set		
Optical system	CFI infinity optical system		
Illumination	Illumination High luminescent white LED illuminator, 45mm diameter filter can be installed		
Eyepieces (F.O.V., mm)	With diopter adjustment: EC-E CFI 10X (20)		
Focusing mechanism	Coaxial coarse/fine focusing, Cross roller guide, Focusing stroke: Up 2 mm/Down 13 mm, Coarse: 37.7 mm/rotation, Fine: 0.2 mm/rotation, With coarse focus knob torque adjustment ring, Includes stage vertical movement stopper		
Tubes	EC-T-TB Binocular tube, Inclination: 30°, Pupillary distance: 50 - 75 mm, Eyepoint height: adjustable to 2 positions		
Revolving nosepiece	Reversed-type quadruple nosepiece (within main body)		
Stage	Rectangular mechanical stage (within main body), with specimen holder, with vernier calibrations, Cross travel: 76 (X) x 30 (Y) mm		
Objectives (NA / W.D.)	CFI BE2 Plan Achromat 4X (0.1 / 25mm), 10X (0.25 / 6.7mm), 40X (0.65 / 0.6mm), 100X Oil (1.25/0.14mm)		
Condenser	Abbe Condenser, NA 0.1~1.25, Color-coded position guide markings of aperture diaphragm, corresponding to objective magnifications		
Fungus-proof treatment	Antifungal paint is applied around optical system		
Power supply	Uses the included AC adapter (input: 100-240 VAC, 0.48A Max., 50-60 Hz, output: 5.0 VDC, 3.0A Max.)		
Digital Camera	<u>HE1210-NE</u>	<u>TE1200-NE</u>	<u>CA1200-NE</u>
			

Specifications are subject to change without any obligation on the part of the manufacturer.



LANOPTIK TECHNOLOGIES LTD

No. 72 Hongjing Street, Lejia Road, Baiyun District, Guangzhou, China. 510400

Phone: +86 20 3898 6017 | Fax: +86 20 3847 6076

Website: <http://www.lanoptik.com> | Email: info@lanoptik.com